

# HP1 COMPACT POWER UNIT PARTS LIST

Item No	P/N	Qty	Description
<b>FIG. 1 - ENGINE ASSY</b>			
1	23332	1	Engine, Briggs & Stratton
2	18384	1	Oil Filter
3	08667	4	Self Tapping Screw, #10-24 x 3/8 in.
4	23814	1	Air Duct, Back
5	04539	6	Washer
6	01298	8	Lockwasher
7	23846	6	Capscrew, M6 x 1 x 16 mm
8	-----	4	Capscrew (Incl'd with Engine)
9	23772	1	Muffler, modified
10	-----	1	Heat Shield (incl'd w/item 14)
11	-----	1	Washer (Incl'd with Engine)
12	-----	1	Capscrew (Incl'd with Engine)
13	-----	2	Screw (incl'd w/item 14)
14	08668	12	Sheet Metal Screw
15	23722	1	Choke Cable Assy (See Fig. 3)
16	44946	1	Oil Cooler Kit
17	-----	-	No Item
18	23662	1	Cooler Mount Weldment
19	31242	4	Locknut, 7/16-14
20	-----	-	NO ITEM
21	07783	1	Blower Housing
22	05694	4	Washer, 7/16 in.
23	23778	4	Standoff
24	07752	1	Cooler Mount
25	23812	1	Air Duct Weldment
26	03906	2	ESNA Nut, 5/16 in. -18
27	12175	A/R	Washer, 5/16 (as required)
28	23788	4	Spacer
29	03031	5	Lockwasher
30	04637	2	Capscrew, 5/16 in.-18 x 2-1/2
31	07818	1	Key
32	01397	2	Set Screw
33	23781	1	Blower Hub & Shaft Extension
34	07819	1	Key
35	08035	1	Blower Wheel
36	00899	4	Capscrew
37	23719	1	Coupling Assy (incl'd set screws, item 30 & 31 in fig. 2)
38	08669	1	Inlet Ring Gasket
39	07809	1	Inlet Ring
40	08667	5	Screw, Self Tapping
41	31241	2	Screw
<b>FIG. 2 FRAME ASSEMBLY</b>			
1	31241	5	Screw, 5/16 in.-18, slotted pan head
2	23401	1	Fuel Tank
3	07810	1	Fuel Tank Cap
4	21688	1	Tank Support
5	04416	2	Capscrew, 5/16 in.-18 x 1/2
6	23774	1	Actuator Assy (See Fig. 4)
7	00719	1	Nut
8	00035	1	Capscrew, 1/4 in.-20 x 1-1/4
9	04539	7	Washer, 1/4 in.
10	03907	8	Capscrew, 1/4 in.-20 x 1-1/2
11	27759	2	Top Grille
12	08080	2	Handle Grip
13	23775	1	Dash Panel Assy (See Fig. 5)
14	02072	2	Capscrew, 5/16 in.-18 x 3/4
15	03031	9	Lockwasher, 5/16 in.
16	12175	15	Flatwasher, 5/16 in.
17	08201	2	Capscrew, 5/16 in.-18 x 1-1/2
18	29133	1	Proposition 65 Sticker (California)
19	04530	2	Washer, 1/4 in.
20	07757	4	Capscrew, 7/16 in.-14 x 1-1/2
21	05967	1	Inlet Flange
22	08045	1	O-ring, 1-1/2 in. x 1-3/4 x 1/8 R17
23	-----	1	Key (Incl'd with item 26)
24	07860	2	Capscrew, 3/8 in.-16 x 1-1/4
25	01459	2	Lockwasher, 3/8 in.
26	04134	1	Hydraulic Pump
27	-----	1	Retaining Ring (Incl'd with item 30)
28	07803	1	Hydraulic Tank Assy (See Fig. 6)
29	-----	1	Washer, (Incl'd with item 30)
30	23719	1	Coupling Assy (Incl'd item 31)
31	-----	1	Coupling Sleeve (Incl'd with item 30)

Item No	P/N	Qty	Description
32	10499	1	Battery Pad
33	07758	1	Tank Support Tab
34	04303	1	Battery
35	00429	2	Nut
36	03031	2	Lockwasher, 5/16
37	28983	1	Weight Sticker
38	05227	2	Carriage Bolt, 5/16 in. x 3/4
39	31240	2	Retaining Ring
40	01918	2	Washer
41	16310	2	Wheel
42	04566	1	Battery Strap
43	03906	4	Nut, ESNA, 5/16 in.-18
44	-----	2	Incl'd with item 47
45	370504	2	Capscrew, 5/16 in.-18 x 2-3/4
46	370513	4	Capscrew, 5/16 in.-18 x 1-3/4
47	28091	1	Frame Weldment
48	16363	2	Axle
49	28093	2	Handle
50	56687	1	Throttle Cable Kit
51	07764	1	Choke Pull Decal
52	28985	1	Exhaust Sticker (CE models only)
53	28988	1	Exhaust Fumes Sticker (CE models only)
54	28323	1	CE Sticker (CE models only)
55	28788	1	Manual Sticker (CE models only)
56	28984	1	Fuel Sticker (CE models only)
57	29036	1	Sound Power Level Sticker (CE models only)
58	28786	1	Coupler Sticker (CE models only)
<b>FIG. 3 CHOKE CABLE ASSY - P/N 23722</b>			
1	NSS	1	Choke Cable Anchor
2	NSS	1	Choke Cable Assy
3	NSS	1	Bracket
<b>FIG. 4 ACTUATOR ASSY</b>			
1	04913	1	Cable Stop
2	23717	1	Cylinder Pull Wire
3	-----	1	Screw (incl'd with item 1)
4	15161	1	Gland Cap
5	06891	1	O-ring
6	02838	2	Back-up Ring
7	23370	1	O-ring
8	15160	1	Keeper
9	20550	1	Spring
10	15148	1	Piston
11	360009	1	Hose Assy
12	15158	1	Cylinder
13	05931	1	Hose Clamp
14	23785	1	Base Weldment
15	23784	1	Control Weldment
16	23783	1	Cylinder Lever Weldment
17	04539	1	Washer, 1/4 in.
18	15162	1	Fast Pin
19	00769	1	Capscrew, 1/4 in.-20 x 3/4
<b>FIG. 5 DASH PANEL &amp; VALVE ASSY</b>			
1	25633	1	Swivel Fitting
2	24061	1	Male Coupler Body - 1/2 in.
3	24237	1	Panel Weldment Assy (incl'd item 12)
4	20606	1	Hour Meter
5	07760	1	Spool Washer
6	07820	1	Retaining Ring
7	00147	1	Nut
8	05849	1	Control Rod
9	02633	1	Knob
10	-----	1	Incl'd with item 14
11	-----	1	Incl'd with item 14
12	07766	1	Decal
13	24060	1	Female Coupler Body - 1/2 in.
14	07808	1	ON/OFF Switch
15	07793	1	Steel Ball
16	07754	1	Spring
17	01212	1	Pipe Plug
18	07968	1	Starter Switch
19	00899	2	Capscrew

Item No	P/N	Qty	Description
<b>FIG. 5 DASH PANEL &amp; VALVE ASSY Continued . . .</b>			
20	01298	2	Lock Washer
21	07792	1	Elbow Fitting
22	01539	1	Elbow Fitting
23	07745	2	Dowel Pin
24	05551	1	Capscrew
25	01459	1	Lock Washer
26	07753	1	Bar
27	07771	1	Valve Spool
28	06988	1	Backup Ring
29	06989	1	O-ring
30	07781	1	Valve Block
31	04312	1	Relief Valve
32	00955	1	Pipe Plug
33	04868	1	Elbow Hose Barb
34	-----	1	Incl'd with item 4
35	-----	2	Incl'd with item 4
36	-----	1	Incl'd with item 4
37	00140	1	Quad Ring
<b>FIG. 6 TANK ASSY</b>			
1	07763	1	Filler Cap
2	03760	4	Capscrew, 5/16 in.-18 x 1-1/2
3	28987	1	Hydraulic Oil Sticker
4	07772	1	Filler Top
5	06989	1	O-ring
6	07795	1	Oil Filter (Baldwin PT-289)
7	04708	1	Spring
8	07799	1	O-ring
9	08643	1	Hydraulic Filter Enclosure
10	07792	1	45 Degree Elbow
11	04867	1	Hose End Barb
12	08253	4	Capscrew, 1/4 in.-20 x 1-1/2
13	07780	1	Filter Block
14	01603	1	Steel Ball
15	07754	1	Spring
16	01271	1	Pipe Plug
17	09590	1	Gasket
18	09591	1	Filter Grip Plate
19	05535	1	Breather
20	07748	1	Sight Pipe
21	07784	1	Hydraulic Tank
<b>FIG. 7 HOSES, FITTINGS, and CLAMPS</b>			
1		2	90 Degree Elbow
2	04889	6	Hose Clamp
3	08226	1	Hose
4		1	Hose Assy
5		1	Hose Assy
6	08044	1	Hose
7	08045	2	Hose Clamp
8	06715	1	Suction Hose
9	11179	2	Hose Clamp
10	07747	1	Suction Sleeve
11	07749	1	Suction Tube
12	24389	1	Hose
13	04321	1	Elbow Fitting
15	23779	1	Hose Clamp
16	23777	1	Fuel Hose
17	19947	1	Fuel Filter & Hose Assy
18	31243	1	Wire Tie

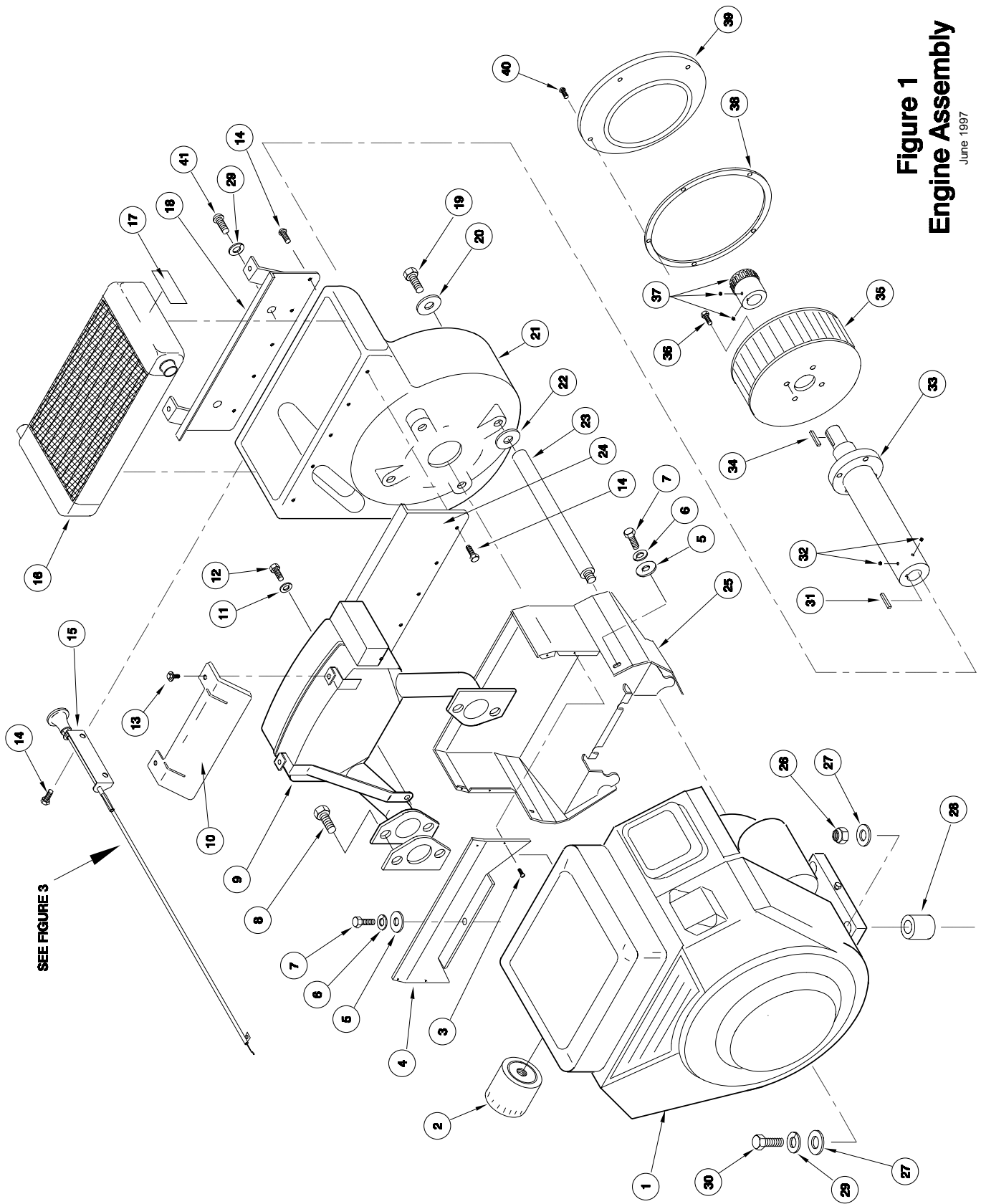
Item No	P/N	Qty	Description
1	372067	3	Double Spade Connector
2	23715	1	Diode Wire Assy
3	09153	1	Wire Assy (14 gauge, black)
4	16320	1	Wire Assy (14 gauge, red)
5	23685	1	Wire Assy (14 gauge, yellow)
6	16321	1	Wire Assy (14 gauge, white)
7	08720	1	Wire Assy (6 gauge, black)
8	28898	1	Wire Assy (6 gauge, red)
9	-----	1	Wire, 14 gauge, red, incl'd w/engine
10	23681	1	Wire Assy (14 gauge, green)
11	23684	1	Wire Assy (14 gauge, black)
12	08724	1	Wire Assy (14 gauge, black)
13	23682	1	Wire Assy (14 gauge, green)

**NOTE:** Use Figure Number and Item Number when ordering.

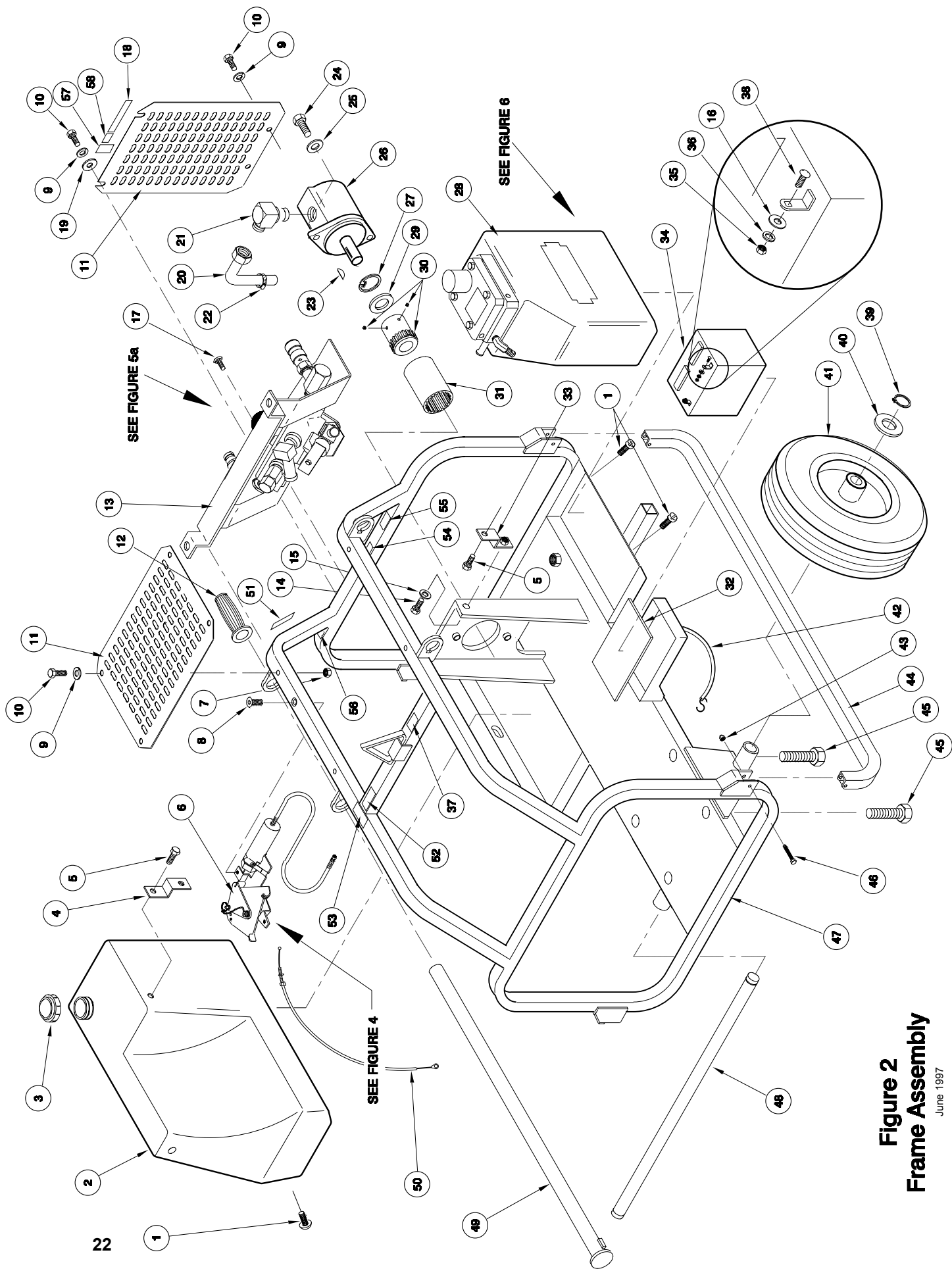
## MODEL DESCRIPTIONS

<b>HP18294</b>	<b>Compact Power Unit - U.S.A.</b>
<b>HP1829401</b>	<b>Compact Power Unit - CE (European Communities)</b>
<b>HP18299</b>	<b>Compact Power Unit with Hose Basket - U.S.A.</b>

## NOTES

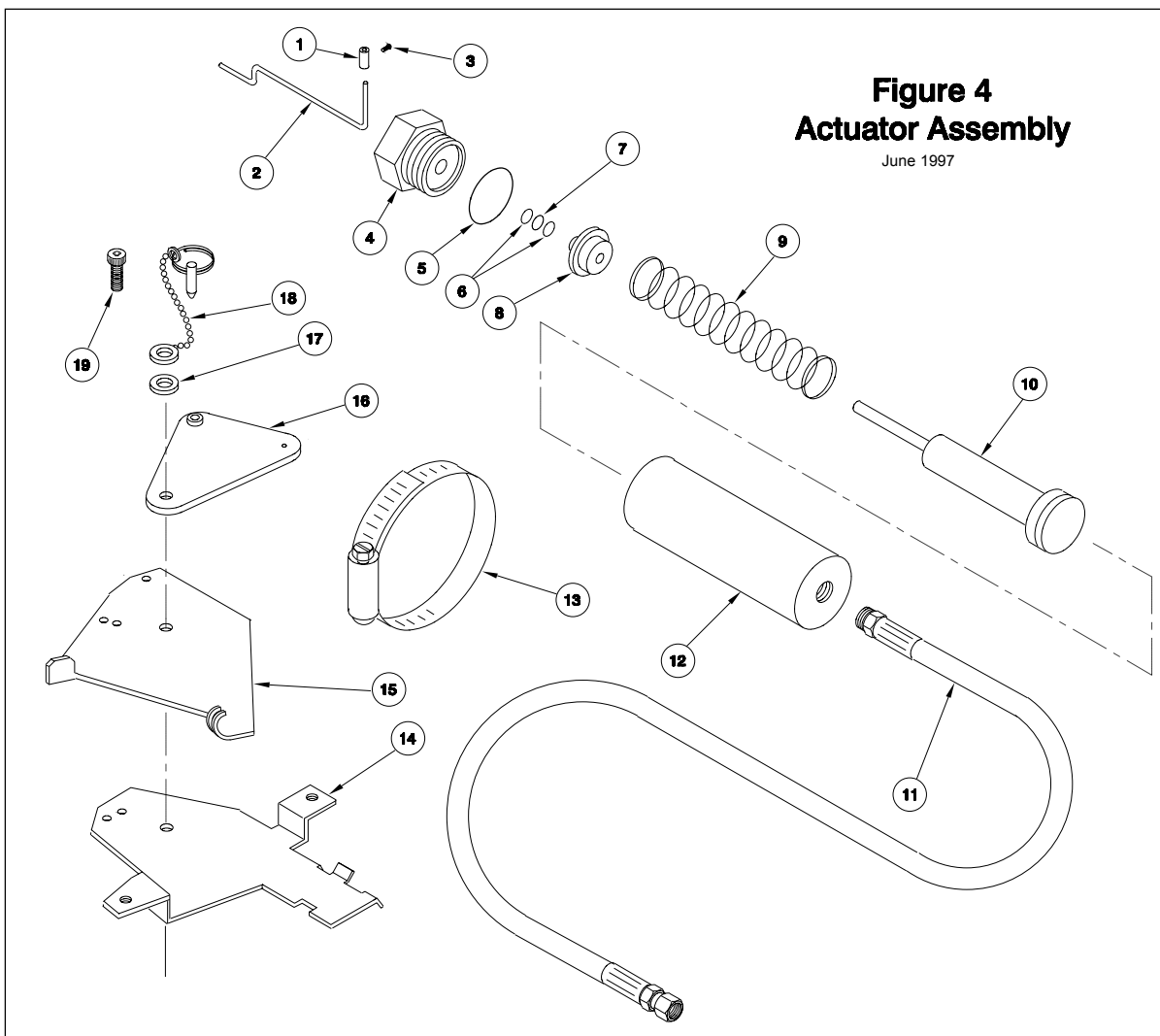
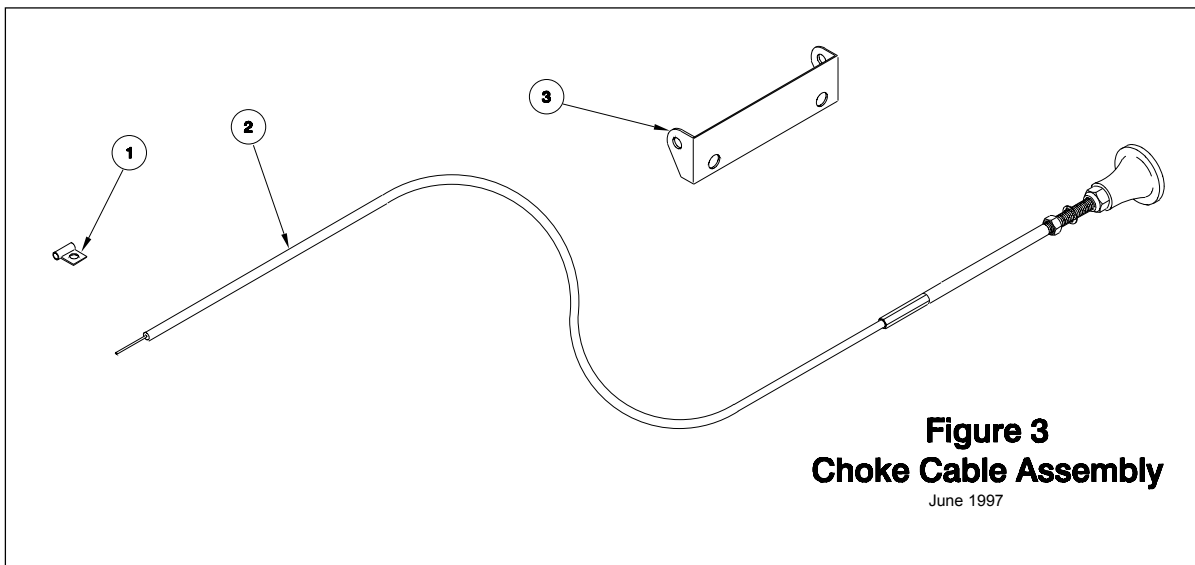


**Figure 1**  
**Engine Assembly**  
 June 1997



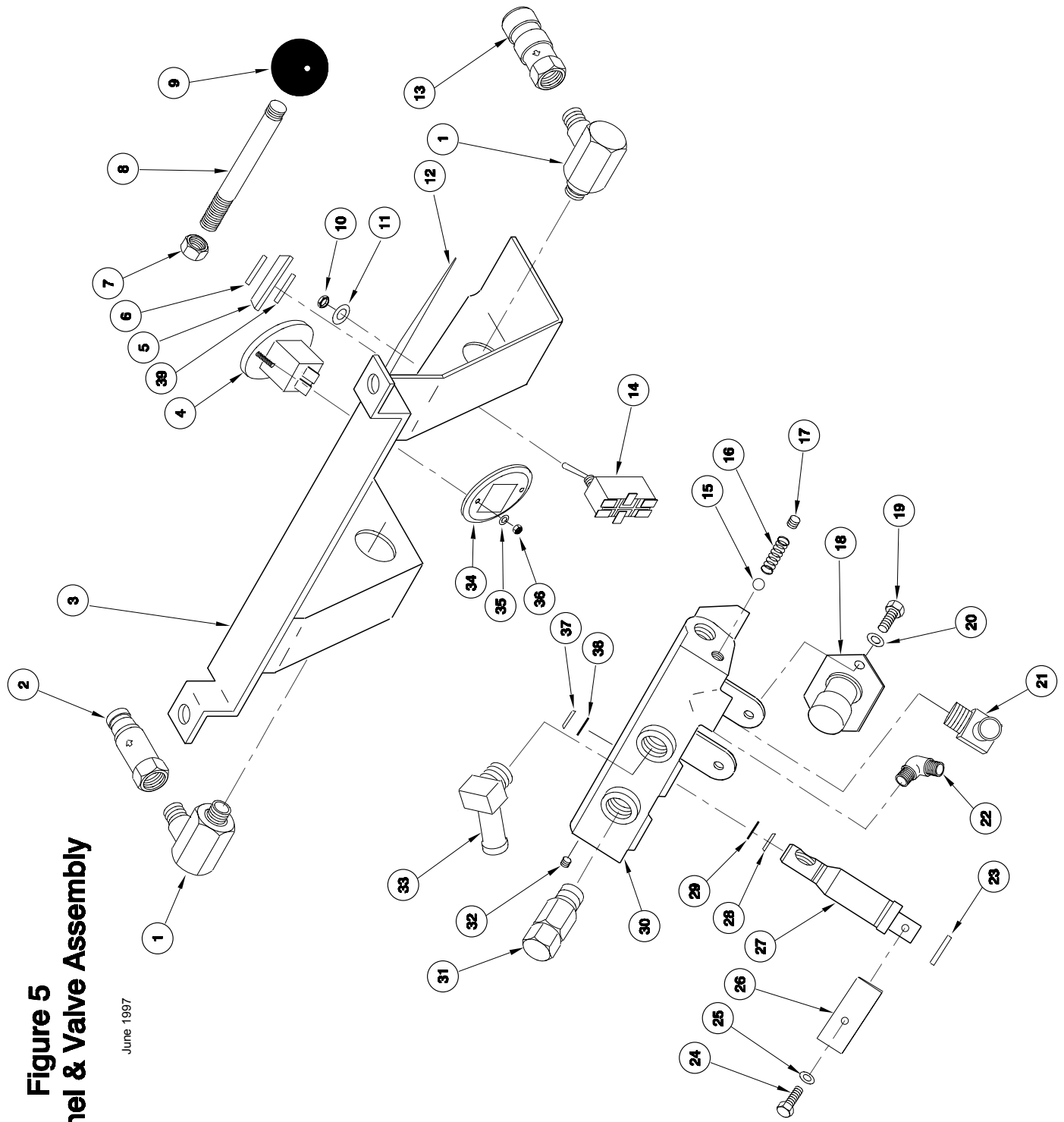
**Figure 2**  
**Frame Assembly**

June 1997



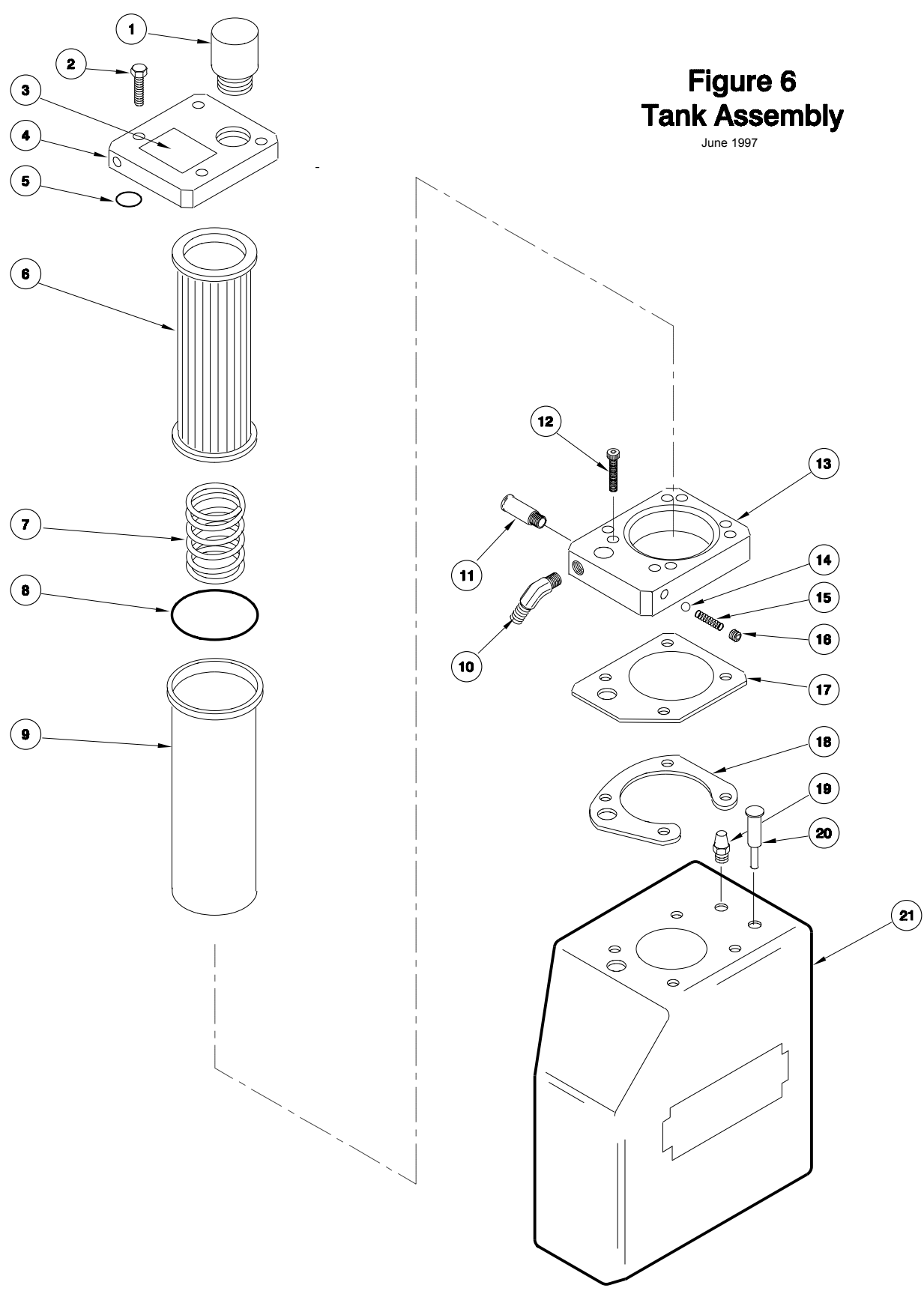
**Figure 5**  
**Dash Panel & Valve Assembly**

June 1997



**Figure 6**  
**Tank Assembly**

June 1997

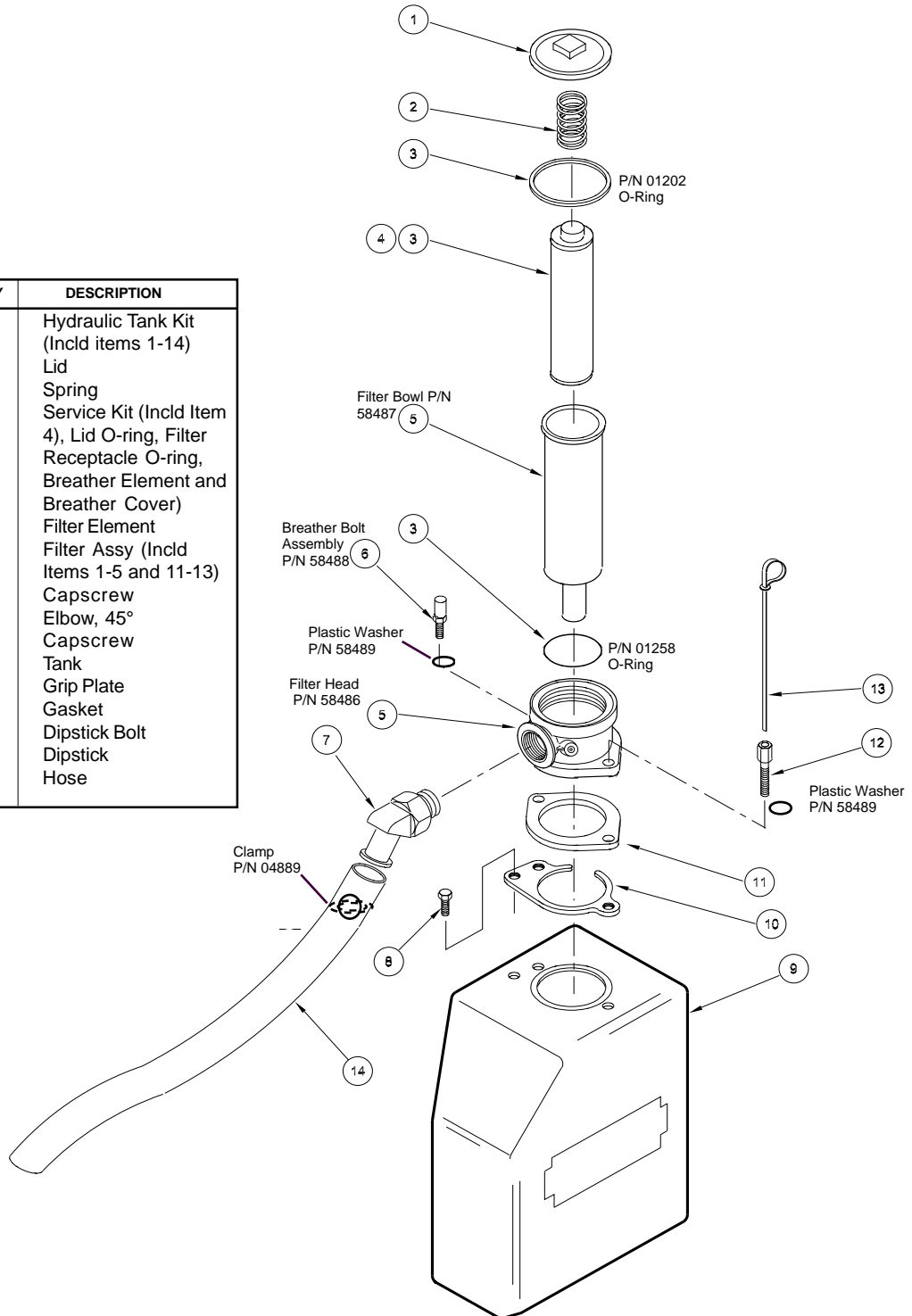


# Figure 6A

## Hydraulic Tank Parts

05/22/02

ITEM	P/N	QTY	DESCRIPTION
	52754	1	Hydraulic Tank Kit (Incl items 1-14)
1	52774	1	Lid
2	52775	1	Spring
3	43592	1	Service Kit (Incl Item 4), Lid O-ring, Filter Receptacle O-ring, Breather Element and Breather Cover)
4	40408	1	Filter Element
5	40080	1	Filter Assy (Incl Items 1-5 and 11-13)
6		1	Capscrew
7	40364	1	Elbow, 45°
8		1	Capscrew
9	40389	1	Tank
10	40133	1	Grip Plate
11	52782	1	Gasket
12	52773	1	Dipstick Bolt
13	52772	1	Dipstick
14	04306	1	Hose

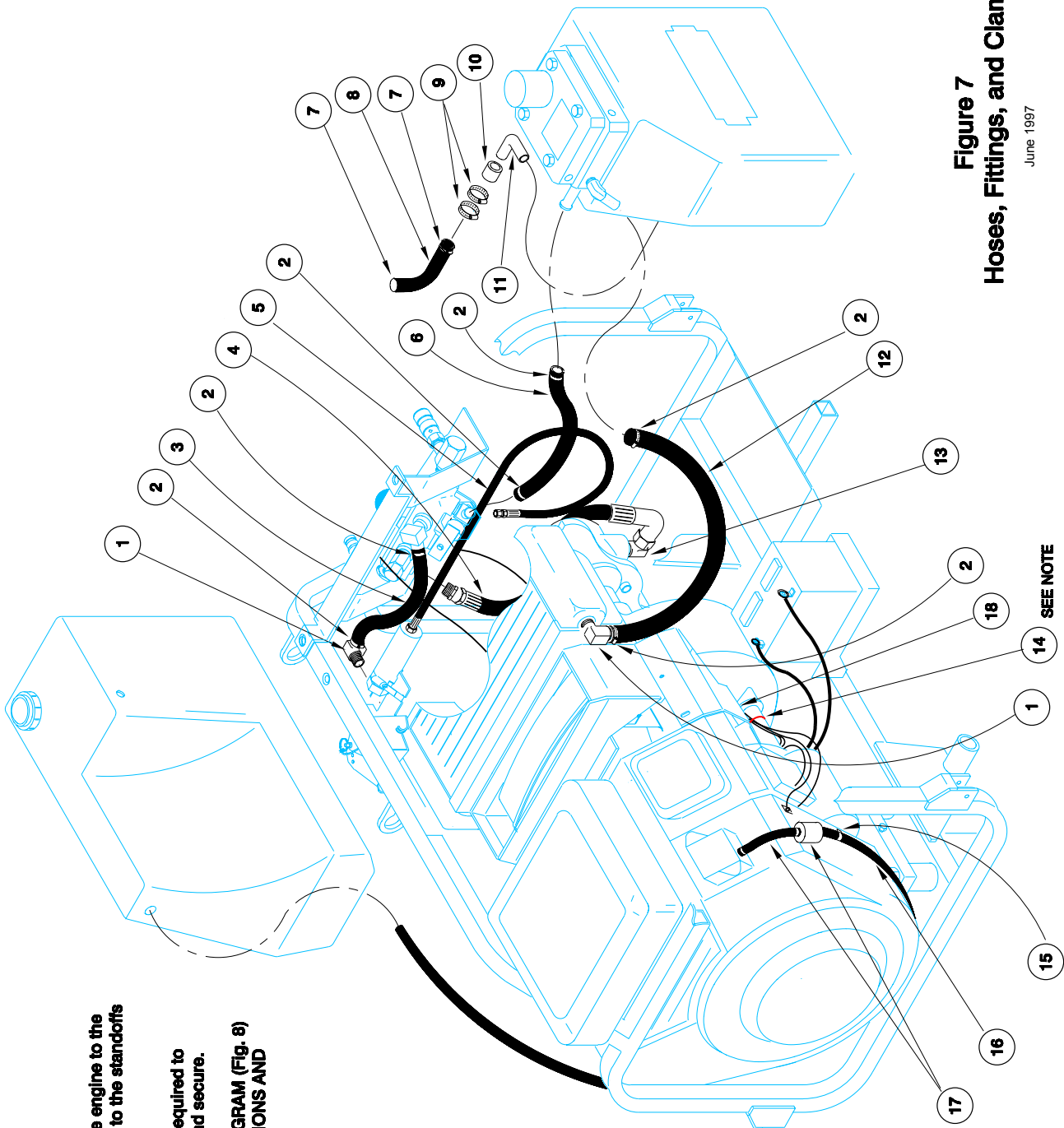




**NOTE:** Wiring from the engine to the dash panel is secured to the standoffs with plastic wire ties.

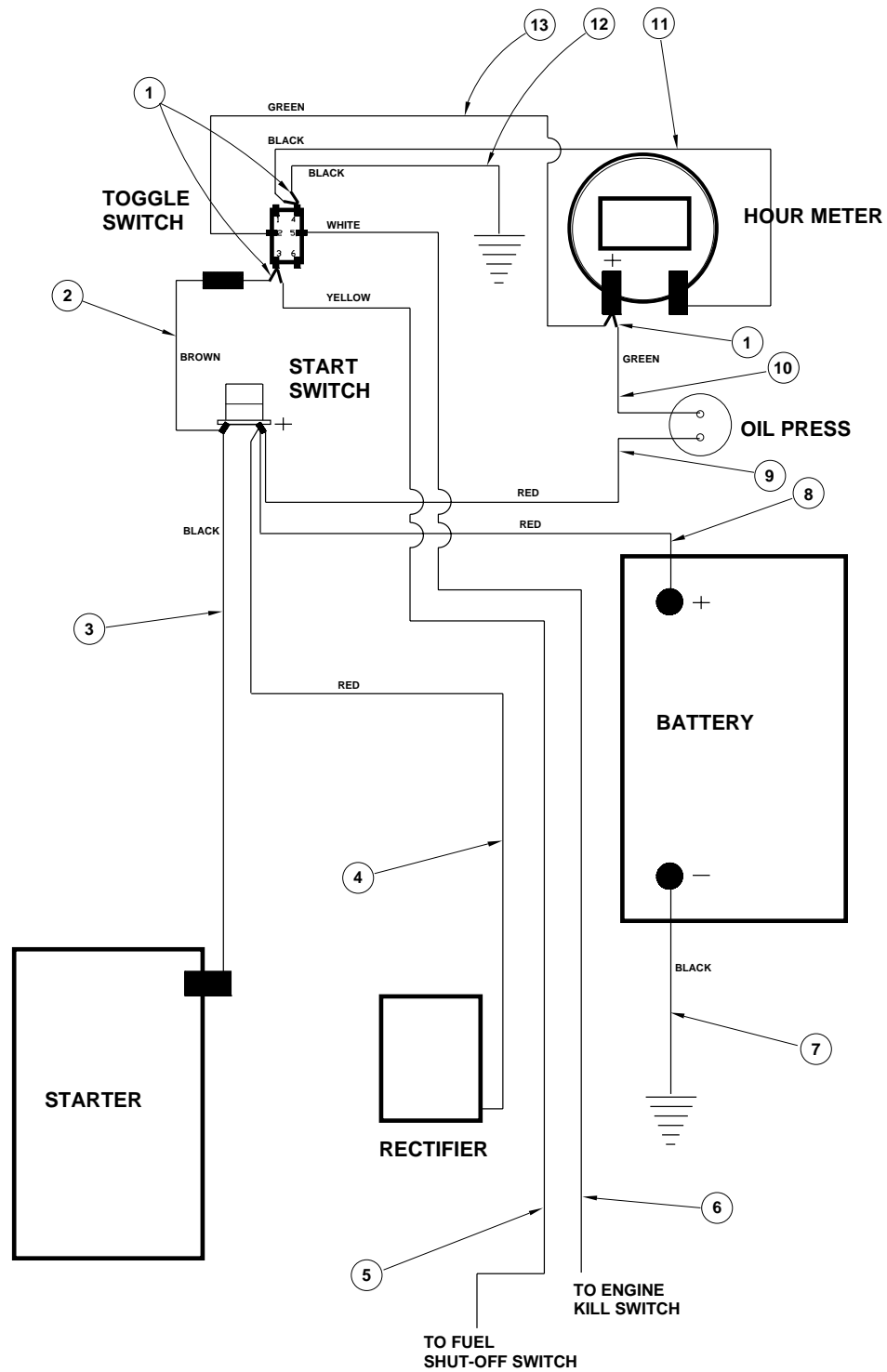
Wire ties are used as required to keep wires bundled and secure.

**SEE THE WIRING DIAGRAM (Fig. 8) FOR WIRE CONNECTIONS AND COLORS.**



**Figure 7**  
**Hoses, Fittings, and Clamps**

June 1997

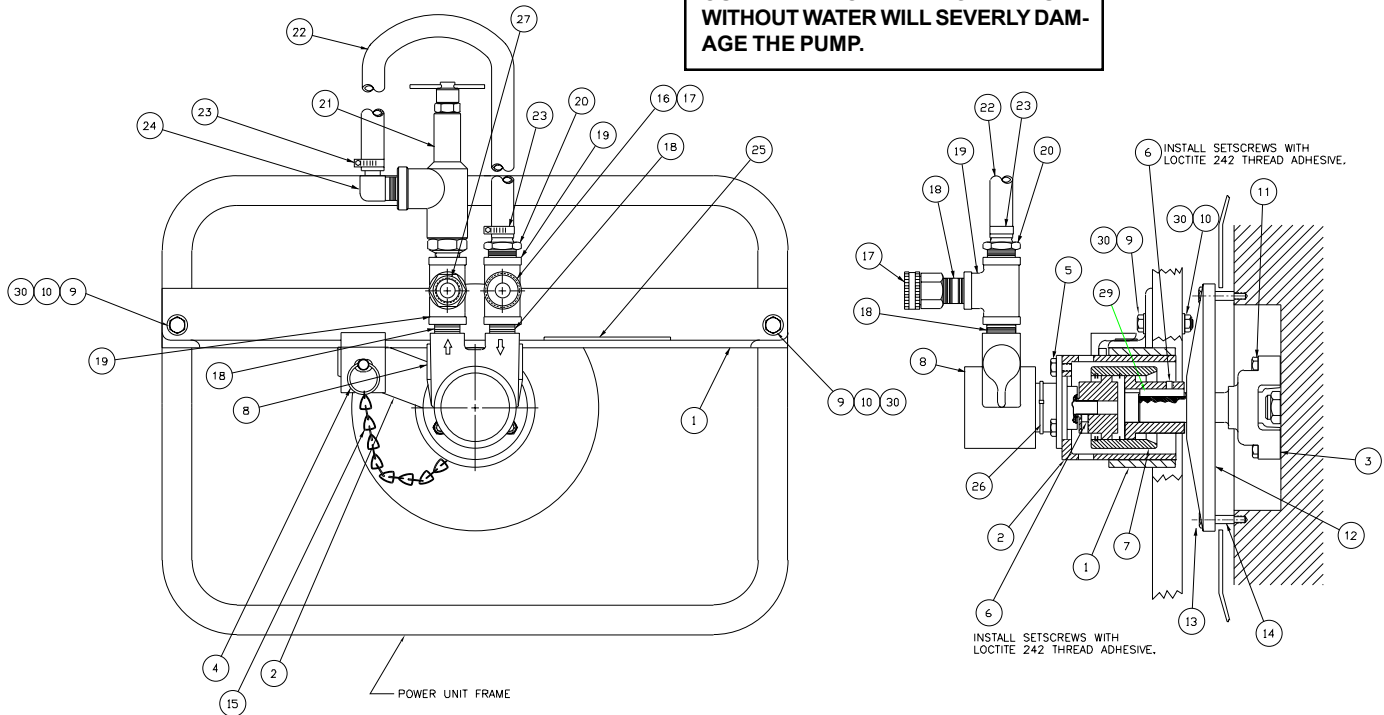


**Figure 8. Wiring Diagram**  
Sept 1998

## P/N 29361 WATER PUMP KIT (Optional Accessory)

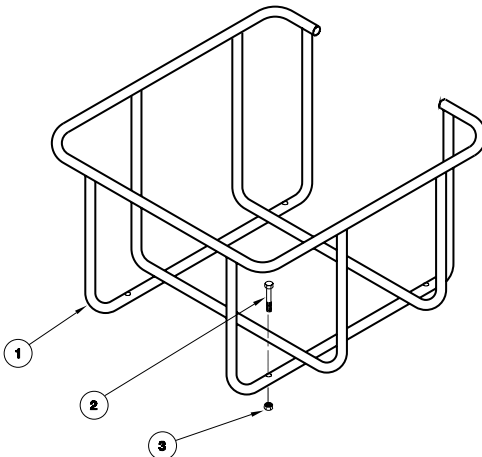
### CAUTION

DO NOT OPERATE THE PUMP WITHOUT WATER. OPERATING THE PUMP WITHOUT WATER WILL SEVERLY DAMAGE THE PUMP.



Item No.	Part. No.	Qty.	Description	Item No.	Part. No.	Qty.	Description	Item No.	Part. No.	Qty.	Description
1	29360	1	Pump Bracket	11	26055	2	Hex Sem Screw	21	30950	1	Regulator Assy
2	30246	1	Adapter	12	26053	1	Rotating Screen	22	04875	1	Hose
3	25720	1	Stub Shaft	13	26054	4	Hex Screw	23	04889	2	Hose Clamp
4	26040	1	Faspin	14	26052	4	Screen Spacer	24	07821	1	Hose Barb
5	01213	3	Capscrew	15	29393	1	Chain	25	29394	1	Caution Sticker
6	01607	4	SetscREW	16	24441	1	Mesh Filter Washer	26	02395	1	Cable Tie
7	30521	1	Drive Coupling	17	03577	1	Garden Hose Conn.	27	26015	1	Adapter
8	26011	1	Water Pump	18	07369	3	Nipple	28	29397	1	Instruction Sheet
9	370502	2	Capscrew	19	26060	2	Pipe Tee	29	07819	1	Key
10	03906	2	ESNA Locknut	20	07822	1	Hose Barb	30	15482	4	Washer

## P/N 13360 HOSE BASKET KIT (Optional Accessory)



Item No.	Part. No.	Qty.	Description
1	24187	1	Hose Basket Assy
2	370100	4	Capscrew
3	00719	3	Nut

# WARRANTY

Stanley Hydraulic Tools (hereinafter called "Stanley"), subject to the exceptions contained below, warrants new hydraulic tools for a period of one year from the date of sale to the first retail purchaser, or for a period of 2 years from the shipping date from Stanley, whichever period expires first, to be free of defects in material and/or workmanship at the time of delivery, and will, at its option, repair or replace any tool or part of a tool, or new part, which is found upon examination by a Stanley authorized service outlet or by Stanley's factory in Milwaukee, Oregon to be DEFECTIVE IN MATERIAL AND/OR WORKMANSHIP.

## EXCEPTIONS FROM WARRANTY

**NEW PARTS:** New parts which are obtained individually are warranted, subject to the exceptions herein, to be free of defects in material and/or workmanship at the time of delivery and for a period of 6 months after the date of first usage. Seals and diaphragms are warranted to be free of defects in material and/or workmanship at the time of delivery and for a period of 6 months after the date of first usage or 2 years after the date of delivery, whichever period expires first. Warranty for new parts is limited to replacement of defective parts only. Labor is not covered.

**FREIGHT COSTS:** Freight costs to return parts to Stanley, if requested by Stanley for the purpose of evaluating a warranty claim for warranty credit, are covered under this policy if the claimed part or parts are approved for warranty credit. Freight costs for any part or parts which are not approved for warranty credit will be the responsibility of the individual.

**SEALS & DIAPHRAGMS:** Seals and diaphragms installed in new tools are warranted to be free of defects in material and/or workmanship for a period of 6 months after the date of first usage, or for a period of 2 years from the shipping date from Stanley, whichever period expires first.

**CUTTING ACCESSORIES:** Cutting accessories such as breaker tool bits are warranted to be free of defects in material and or workmanship at the time of delivery only.

**ITEMS PRODUCED BY OTHER MANUFACTURERS:** Components which are not manufactured by Stanley and are warranted by their respective manufacturers.

- a. Costs incurred to remove a Stanley manufactured component in order to service an item manufactured by other manufacturers.

**ALTERATIONS & MODIFICATIONS:** Alterations or modifications to any tool or part. All obligations under this warranty shall be terminated if the new tool or part is altered or modified in any way.

**NORMAL WEAR:** any failure or performance deficiency attributable to normal wear and tear such as tool bushings, retaining pins, wear plates, bumpers, retaining rings and plugs, rubber bushings, recoil springs, etc.

**INCIDENTAL/CONSEQUENTIAL DAMAGES:** To the fullest extent permitted by applicable law, in no event will STANLEY be liable for any incidental, consequential or special damages and/or expenses.

**FREIGHT DAMAGE:** Damage caused by improper storage or freight handling.

**LOSS TIME:** Loss of operating time to the user while the tool(s) is out of service.

**IMPROPER OPERATION:** Any failure or performance deficiency attributable to a failure to follow the guidelines and/or procedures as outlined in the tool's operation and maintenance manual.

**MAINTENANCE:** Any failure or performance deficiency attributable to not maintaining the tool(s) in good operating condition as outlined in the Operation and Maintenance Manual.

**HYDRAULIC PRESSURE & FLOW, HEAT, TYPE OF FLUID:** Any failure or performance deficiency attributable to excess hydraulic pressure, excess hydraulic back-pressure, excess hydraulic flow, excessive heat, or incorrect hydraulic fluid.

**REPAIRS OR ALTERATIONS:** Any failure or performance deficiency attributable to repairs by anyone which in Stanley's sole judgement caused or contributed to the failure or deficiency.

**MIS-APPLICATION:** Any failure or performance deficiency attributable to mis-application. "Mis-application" is defined as usage of products for which they were not originally intended or usage of products in such a manner which exposes them to abuse or accident, without first obtaining the written consent of Stanley. PERMISSION TO APPLY ANY PRODUCT FOR WHICH IT WAS NOT ORIGINALLY INTENDED CAN ONLY BE OBTAINED FROM STANLEY ENGINEERING.

**WARRANTY REGISTRATION:** STANLEY ASSUMES NO LIABILITY FOR WARRANTY CLAIMS SUBMITTED FOR WHICH NO TOOL REGISTRATION IS ON RECORD. In the event a warranty claim is submitted and no tool registration is on record, no warranty credit will be issued without first receiving documentation which proves the sale of the tool or the tools' first date of usage. The term "DOCUMENTATION" as used in this paragraph is defined as a bill of sale, or letter of intent from the first retail customer. A WARRANTY REGISTRATION FORM THAT IS NOT ALSO ON RECORD WITH STANLEY WILL NOT BE ACCEPTED AS "DOCUMENTATION".

## NO ADDITIONAL WARRANTIES OR REPRESENTATIONS

This limited warranty and the obligation of Stanley thereunder is in lieu of all other warranties, expressed or implied including merchantability or fitness for a particular purpose except for that provided herein. There is no other warranty. This warranty gives the purchaser specific legal rights and other rights may be available which might vary depending upon applicable law.

# SALES & SERVICE DIRECTORY

## **NORTH AMERICA & CORPORATE HEADQUARTERS**

Stanley Hydraulic Tools  
3810 S.E. Naef Road  
Milwaukie, Oregon U.S.A. 97267-5698  
Tel: 503 659 5660  
Fax: 503 652 1780

## **EUROPEAN HEADQUARTERS**

Stanley Hydraulic Tools  
3810 S.E. Naef Road  
Milwaukie, Oregon U.S.A. 97267-5698  
Tel: 503 659 5660  
Fax: 503 652 1780

## **NORTHERN EUROPE**

Stanley Svenska Ab  
Box 1054  
Datavagen 51  
S436 22 Askim, Sweden  
Tel: 46 31 289775  
Fax: 46 31 288099

## **SOUTHERN EUROPE**

Stanley Tools S.p.A.  
Via Trieste 1  
22060 Figino Serenza (Co.)  
Italy  
Tel: 39 31 785111  
Fax: 39 31 781766 / 781094

## **ASIA PACIFIC HEADQUARTERS**

Stanley Hydraulic Tools Asia  
No. 25 Senoke South  
Woodland East Industrial Estate  
Jurong Town  
Singapore 2775  
Tel: 65 7522001  
Fax: 65 7522018  
Telex: RS 23945 STANLEY

## **AUSTRALIA-NEW ZEALAND HEADQUARTERS**

Stanley Hydraulic Tools  
3810 S.E. Naef Road  
Milwaukie, Oregon U.S.A. 97267-5698  
Tel: 503 659 5660  
Fax: 503 652 1780

## **CENTRAL & SOUTH AMERICA HEADQUARTERS**

Stanley Hydraulic Tools  
3810 S.E. Naef Road  
Milwaukie, Oregon U.S.A. 97267-5698  
Tel: 503 659 5660  
Fax: 503 652 1780



### **Stanley Hydraulic Tools**

Division of the Stanley Works  
3810 S.E. Naef Road  
Milwaukie, Oregon 97267-5698  
Phone: 503/659-5660  
Fax: 503/652-1780